

Niigata in Japan Ski Guide

NIIGATA
in
JAPAN

○ TOKYO




○ KYOTO
○ NAGOYA
○ OSAKA



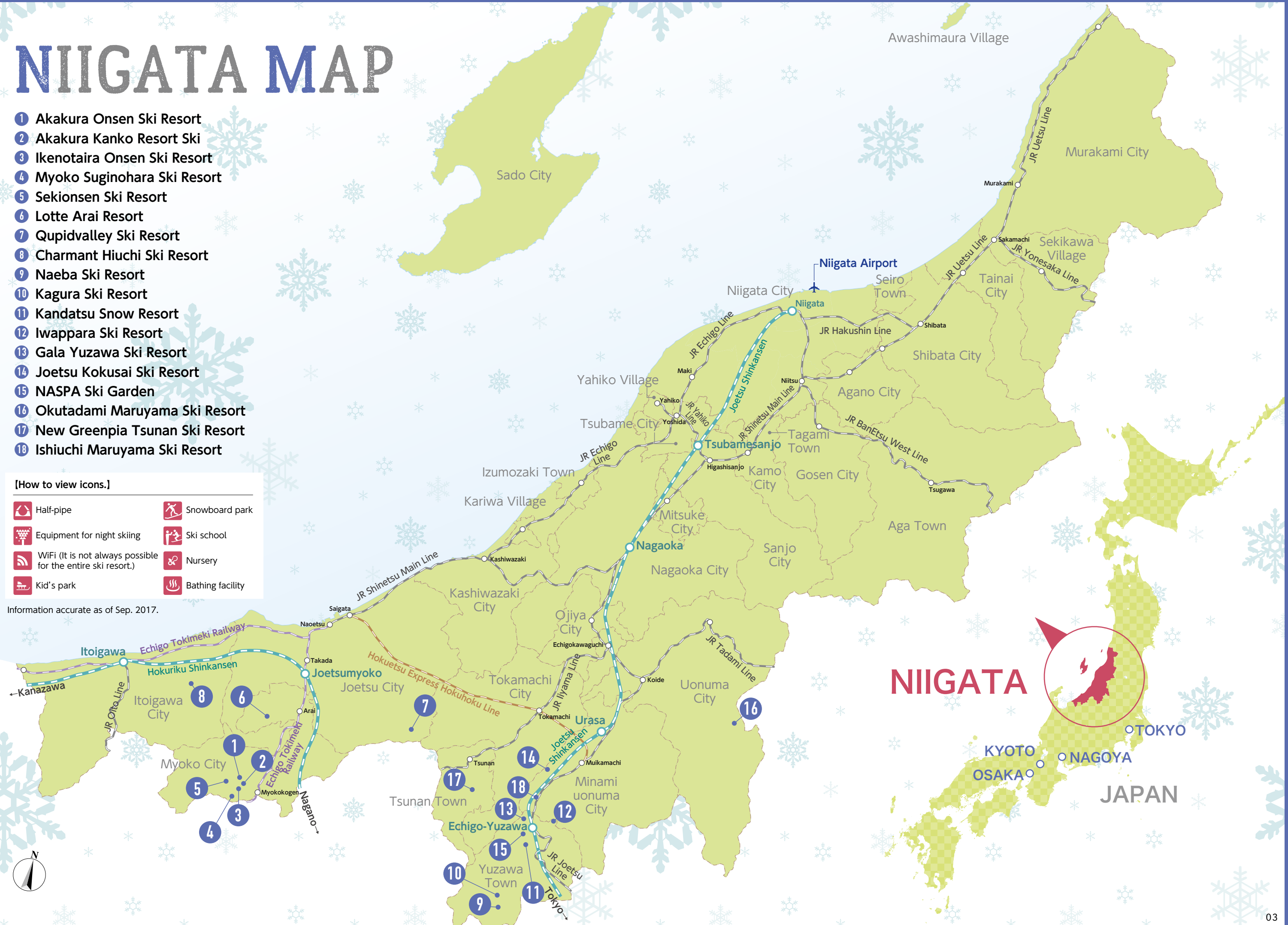
NIIGATA MAP

- 1 Akakura Onsen Ski Resort
- 2 Akakura Kanko Resort Ski
- 3 Ikenotaira Onsen Ski Resort
- 4 Myoko Suginojara Ski Resort
- 5 Sekionsen Ski Resort
- 6 Lotte Arai Resort
- 7 Qupidvalley Ski Resort
- 8 Charmant Hiuchi Ski Resort
- 9 Naeba Ski Resort
- 10 Kagura Ski Resort
- 11 Kandatsu Snow Resort
- 12 Iwappara Ski Resort
- 13 Gala Yuzawa Ski Resort
- 14 Joetsu Kokusai Ski Resort
- 15 NASPA Ski Garden
- 16 Okutadami Maruyama Ski Resort
- 17 New Greenpia Tsunan Ski Resort
- 18 Ishiuchi Maruyama Ski Resort

[How to view icons.]

- | | |
|---|--|
|  Half-pipe |  Snowboard park |
|  Equipment for night skiing |  Ski school |
|  WiFi (It is not always possible for the entire ski resort.) |  Nursery |
|  Kid's park |  Bathing facility |

Information accurate as of Sep. 2017.



01

Akakura Onsen Ski Resort

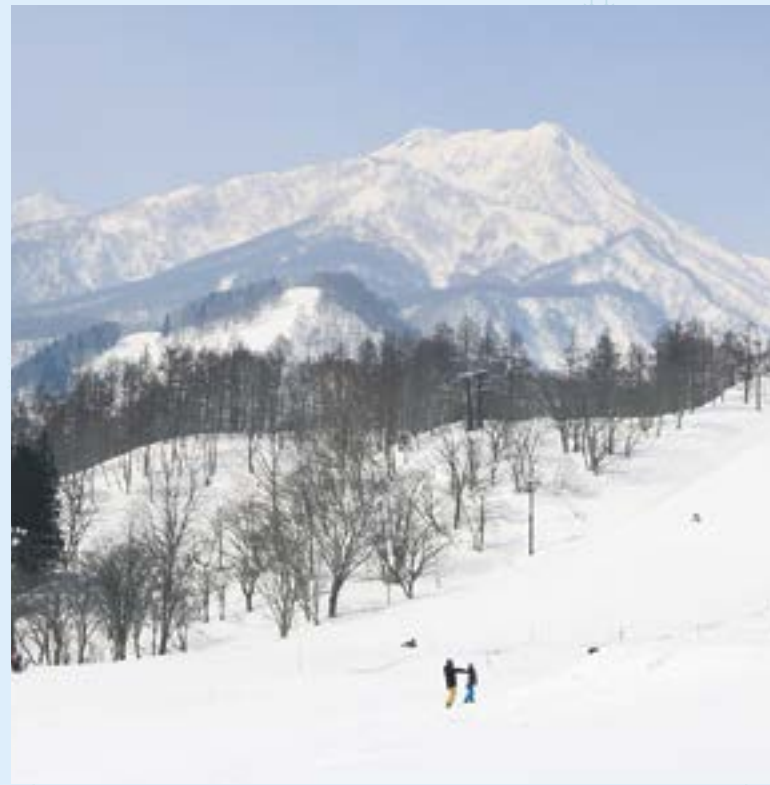
Address Akakura Onsen, Myoko City Phone number 0255-87-2125
<http://www.akakura-ski.com>

Directions

Expressway About 8 minutes by car from the Myoko Kogen Exit on the Joshin-etsu Expressway

Bullet train About 60 minutes by bus from Joetsu Myoko Station on the Hokuriku Bullet Train Line

With a variety of courses from powder to wide gentle slopes, you are sure to have an enjoyable time the whole day. Small children can enjoy slides, seesaws and sleds in the Kid' s Snow Park. No need to worry about crowds when eating because there are many restaurants on the slopes. Everybody from beginners to advanced skiers, adults and children, are sure to be satisfied!



02

Akakura Kanko Resort Ski

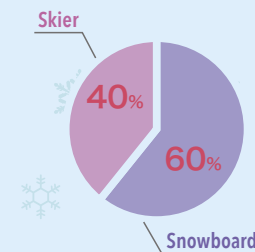
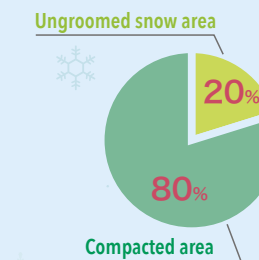
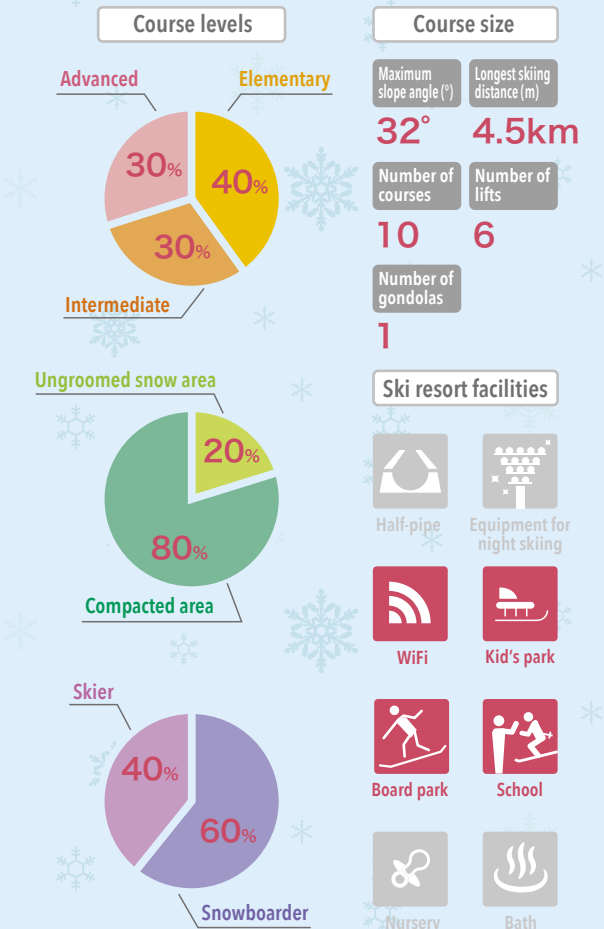
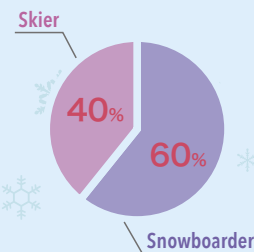
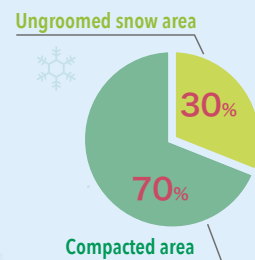
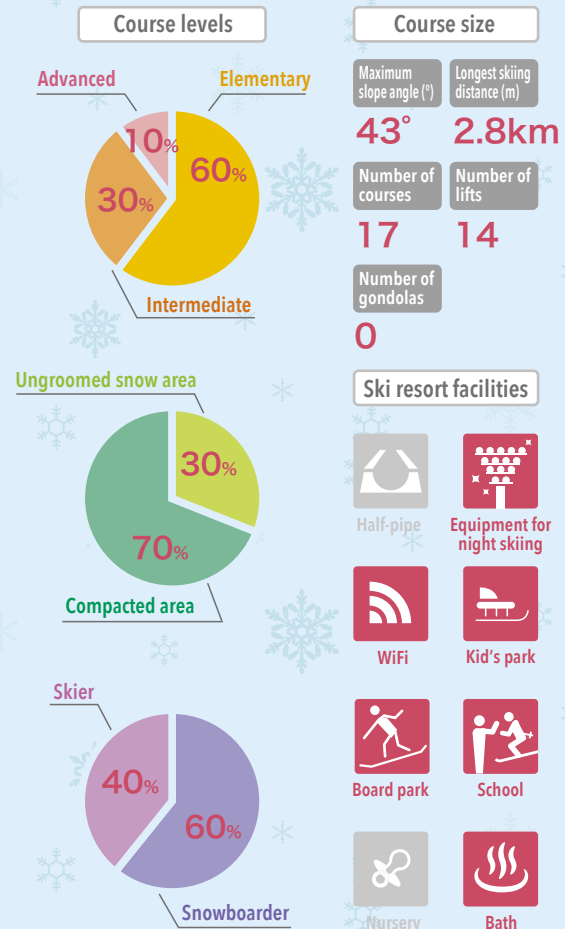
Address 216 Tagiri, Myoko City Phone number 0255-87-2503
<http://www.akr-ski.com>

Directions

Expressway About 8 minutes by car from the Myoko Kogen Exit on the Joshin-etsu Expressway

Bullet train About 60 minutes by shuttle bus from Joetsu Myoko Station on the Hokuriku Bullet Train Line

Designated as the first international ski resort in Japan on December 12, 1937. You can enjoy a long cruise of 4,500 meters from the 5th Lift Station of the hotel. A free ride park is also set in the course. There is also an exclusive area for children who cannot go on the slopes.



03

Ikenotaira Onsen Ski Resort

Address 2457-1 Ikenotaira Onsen, Myoko City Phone number 0255-86-2370

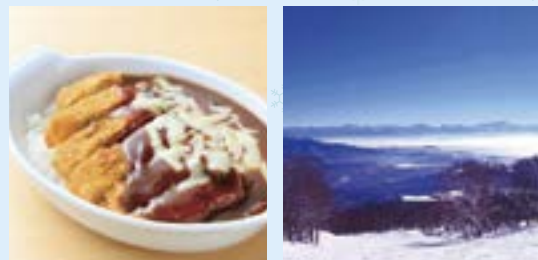
<http://www.ikenotaira.info>

Directions

Expressway About 5 minutes by car from the Myoko Kogen Exit on the Joshin-etsu Expressway

Bullet train About 50 minutes by bus from Joetsu Myoko Station on the Hokuriku Bullet Train Line

There are a variety of 10 courses on the popular Ultra-Wide Bahn, Alpen Brick and Kayaba ski slopes with two tree-run courses of ungroomed snow which many fans love. Kid's Garden is ideal for children's winter sports debuts. Hot springs are also close where you can dine and relax after skiing.



04

Myoko Suginochara Ski Resort

Address Suginosawa, Myoko City Phone number 0255-86-6211

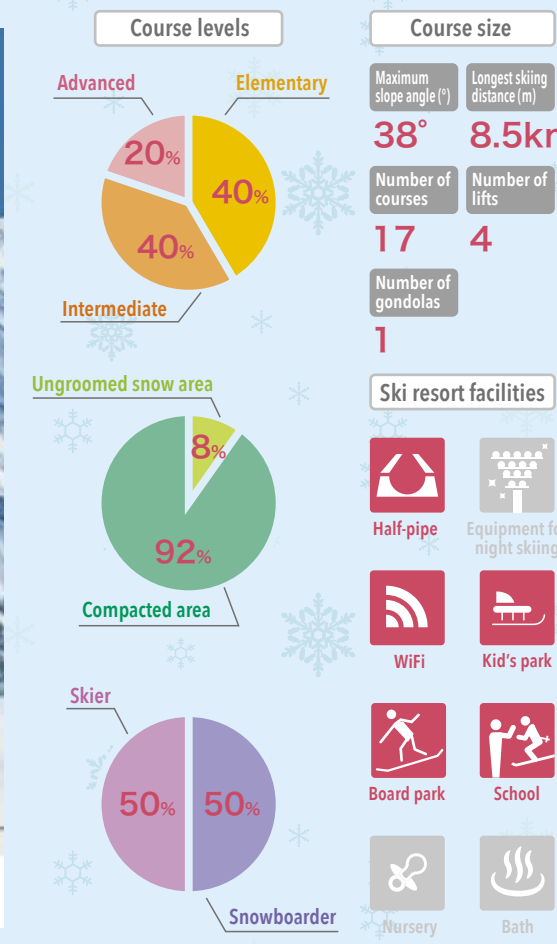
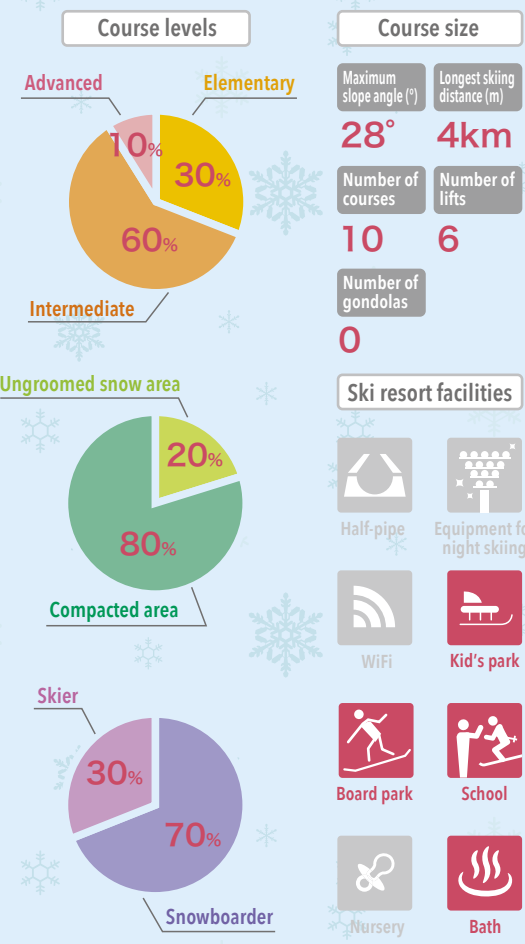
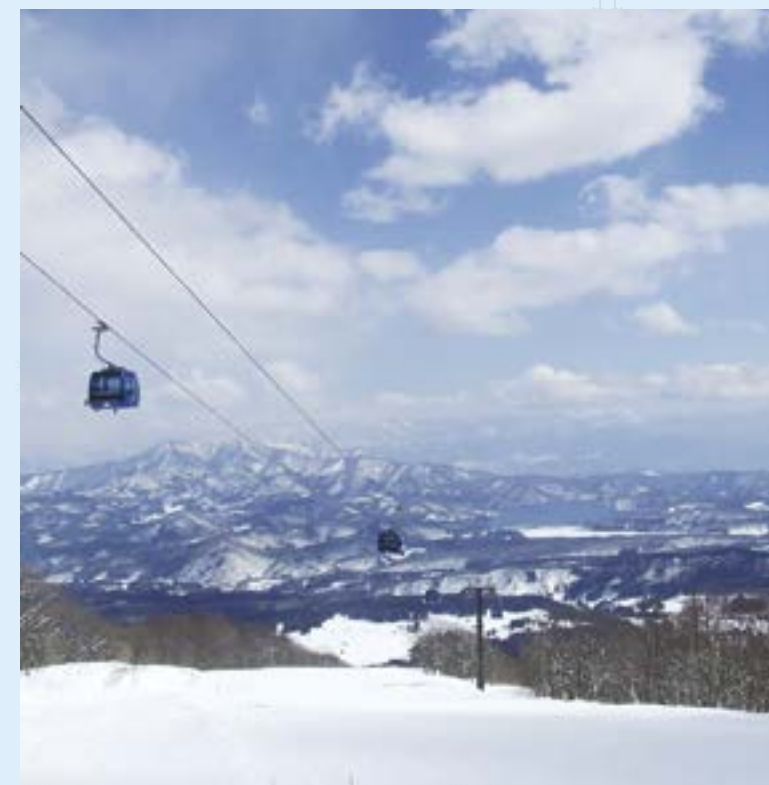
<http://www.princehotels.co.jp/ski/myoko/>

Directions

Expressway About 10 minutes by car from the Myoko Kogen Exit on the Joshin-etsu Expressway

Bullet train About 70 minutes by bus from Joetsu Myoko Station on the Hokuriku Bullet Train Line

Everyone from children to adults can fully enjoy winter sports here because about 80 percent of the 8,500 meter long and spacious ski slope for skiing is for beginners and intermediate skiers. You can enjoy fluffy powder in the ungroomed area.



05

Sekionsen Ski Resort

Address Sekionsen, Myoko City Phone number 0255-82-2316

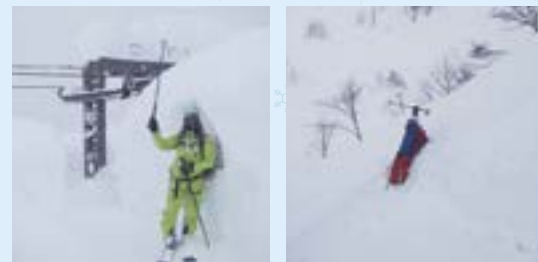
<http://www.sekionsen.com>

Directions

Expressway About 30 minutes by car from the Myoko Kogen Exit on the Joshin-etsu Expressway

Bullet train About 15 minutes by bus from Sekiyama Station via the Tokimeki Railway after arriving at Joetsu Myoko Station on the Hokuriku Bullet Train Line

A ski area located in one of Japan's top heavy snow areas with a high ratio of experiencing powder. Our famous 1-meter-depth snow overnight is second to none, and you can enjoy skiing till early May. The Terrain Park in spring has the oldest history in Japan and is popular with many skiers and snowboarders.



06

Lotte Arai Resort

Address 1966 Ryozenji, Myoko City Phone number 0255-75-1100

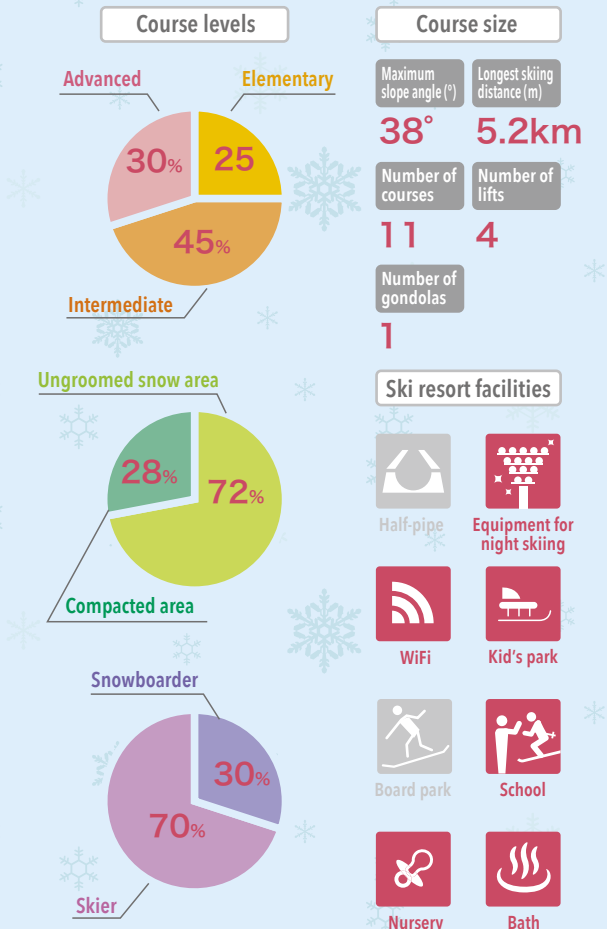
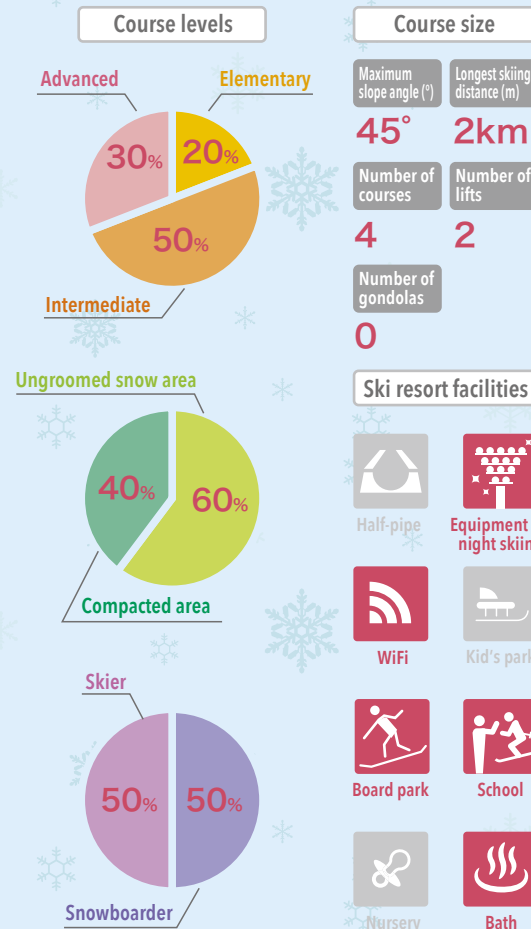
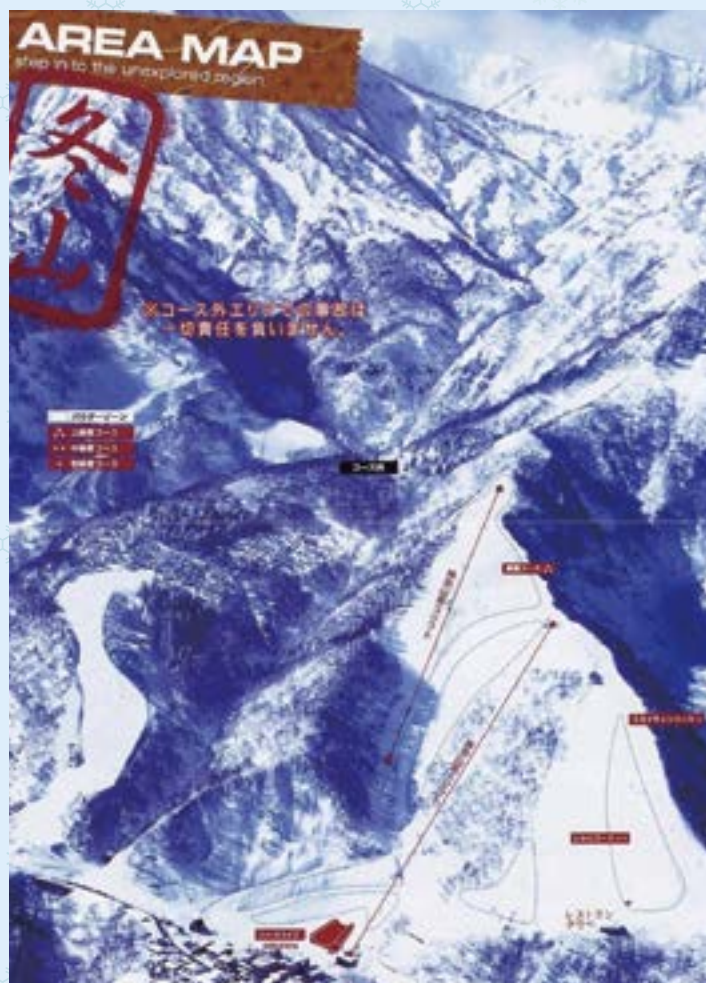
<http://lottearairesort.com>

Directions

Expressway About 8 minutes by car from the Arai Smart Exit on the Joshin-etsu Expressway

Bullet train About 30 minutes by shuttle bus from Joetsu Myoko Station on the Hokuriku Bullet Train Line

You can enjoy skiing in a vast area on Mt. Ogenashi that boasts overwhelming snowfall. The magnificent location that overlooks the ocean on a fine day is also another attraction. There are all-day dining, Italian and Japanese restaurants in the resort hotel as well as Snow Space Hot Springs and Pool, a hot spring springing from 1,750 meters underground.



07

Qupidvalley Ski Resort

Address 4820 Sugawa, Yasuzuka Ward, Joetsu City Phone number 025-593-2041

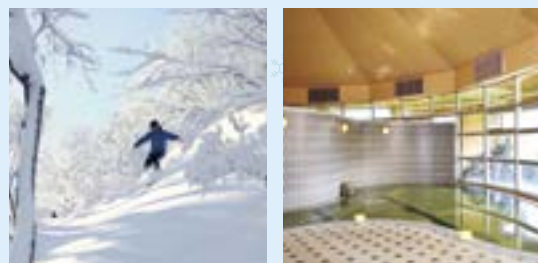
<http://www.yukidaruma-kogen.com>

Directions

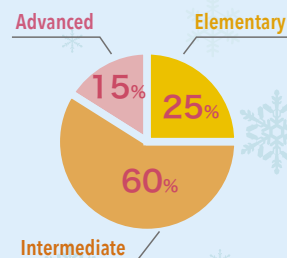
Expressway About 40 minutes by car from the Kakizaki Exit on the Hokuriku Expressway

Bullet train About 15 minutes by shuttle bus from Mushigawa Osugi Station via the Hokuohoku Line after arriving at Joetsu Myoko Station on the Hokuriku Bullet Train Line

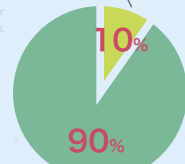
The northern slope overlooking the Sea of Japan and the 4 km long ski courses that even beginners can enjoy are laid out for beginners and intermediate skiers. You can enjoy skiing with your children. We have a snow park, a powder area and a kid's park. We also hold fun events every week. Our rental shop uses the Brand Viking system that enables you to choose whatever items you like.



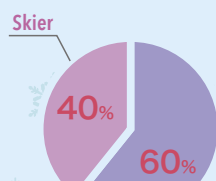
Course levels



Ungroomed snow area



Compacted area



Snowboarder

Course size

Maximum slope angle (°)	Longest skiing distance (m)
32°	4km
Number of courses	Number of lifts
9	3
Number of gondolas	
1	

Ski resort facilities

- Half-pipe
- Equipment for night skiing
- WiFi
- Kid's park
- Board park
- School
- Nursery
- Bath

08

Charmant Hiuchi Ski Resort

Address 1821 Nishi-hiyama, Itoigawa City Phone number 025-568-2244

<http://charmant-hiuchi.jp>

Directions

Expressway About 30 minutes by car from the Nou Exit on the Hokuriku Expressway

Bullet train About 60 minutes by shuttle bus from Itoigawa Station on the Hokuriku Bullet Train Line

Three fifths of the area is ungroomed snow. A ski area located in a heavy snow area where snow coverage of 5 meters is normal. With deep snow coverage, you can ski in a vast ungroomed area. If you are lucky, you can fully enjoy floating in the powder. We are open till early May.



Course size

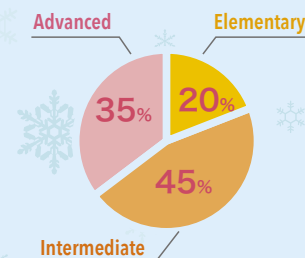
Maximum slope angle (°)	Longest skiing distance (m)	Number of courses	Number of lifts	Number of gondolas
37°	2.7km	16	3	0

Ski resort facilities

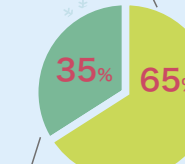
- Half-pipe
- Equipment for night skiing
- WiFi
- Kid's park
- Board park
- School
- Nursery
- Bath



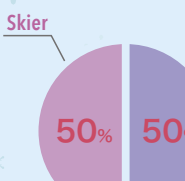
Course levels



Ungroomed snow area



Compacted area



Snowboarder

09

Naeba Ski Resort

Address 202 Mikuni, Yuzawa-machi, Minamiuonuma-gun **Phone number** 025-789-4117
<http://www.princehotels.co.jp/ski/naeba>

Directions

Expressway About 35 minutes by car from the Yuzawa Exit on the Kan-etsu Expressway

Bullet train About 40 minutes by bus from Echigo Yuzawa Station on the Joetsu Bullet Train Line

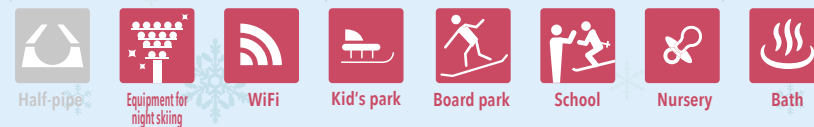
World Cup competitions have been held here many times. Is popular and world-class. Naeba Prince Hotel nearby offers ample facilities such as restaurants, shops and a hot spring. You can come any time and have fun because events are held often. We will make you smile all the time.



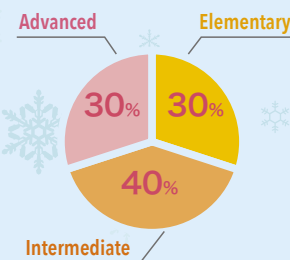
Course size

Maximum slope angle (°) **32°**
 Longest skiing distance (m) **4km**
 Number of courses **24**
 Number of lifts **10**
 Number of gondolas **3**

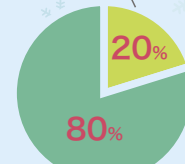
Ski resort facilities



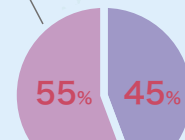
Course levels



Ungroomed snow area



Skier



Snowboarder

10

Kagura Ski Resort

Address 742 Mitsumata, Yuzawa-machi, Minamiuonuma-gun **Phone number** 025-788-9221
<http://www.princehotels.co.jp/ski/kagura/>

Directions

Expressway About 10 minutes by car from the Yuzawa Exit on the Kan-etsu Expressway

Bullet train About 20 minutes by bus from Echigo Yuzawa Station on the Joetsu Bullet Train Line

The main slope is located at an altitude of 1,700 meters where you can enjoy good snow and courses with fresh snow. The Forest Expert Course with Romance Lift No. 5 is something you must see. A total of 23 courses are linked to the adjacent Naeba Ski Resort with a gondola line. One of the attractions is all the courses available to ski.



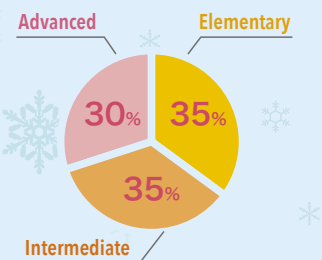
Course size

Maximum slope angle (°) **32°**
 Longest skiing distance (m) **6km**
 Number of courses **23**
 Number of lifts **17**
 Number of gondolas **3**

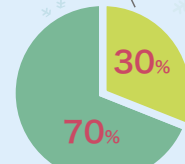
Ski resort facilities



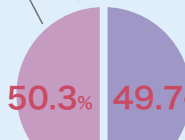
Course levels



Ungroomed snow area



Skier



Snowboarder



11

Kandatsu Snow Resort

Address 4121-1 Kandatsu, Yuzawa-machi, Minamiuonuma-gun Phone number 025-788-0111

<http://www.kandatsu.com>

Directions

Expressway About 3 minutes by car from the Yuzawa Exit on the Kan-etsu Expressway

Bullet train About 10 minutes by shuttle bus from Echigo Yuzawa Station on the Joetsu Bullet Train Line

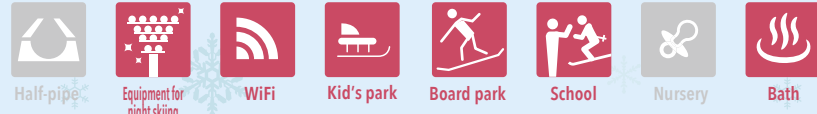
Easy to reach from the Tokyo metropolitan area whether by car or by bullet train. The best snow in the Shiozawa area and there is much snow. Our place is sturdy and secure against strong winds. Though our area is small, our visitors enjoy the park, banks and mogul courses. Open on weekends till 4:00 a.m., you can almost ski all through the night!



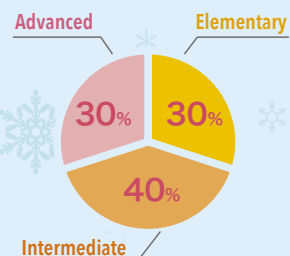
Course size

Maximum slope angle (°)	Longest skiing distance (m)	Number of courses	Number of lifts	Number of gondolas
45°	3.5km	14	6	0

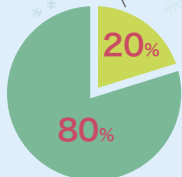
Ski resort facilities



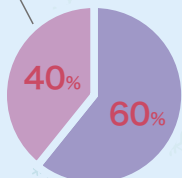
Course levels



Ungroomed snow area



Skier



Snowboarder



12

Iwappara Ski Resort

Address 731-79 Tsuchitaru, Yuzawa-machi, Minamiuonuma-gun Phone number 025-787-3211

<http://www.iwa-ppara.com>

Directions

Expressway About 5 minutes by car from the Yuzawa Exit on the Kan-etsu Expressway

Bullet train About 10 minutes by shuttle bus from Echigo Yuzawa Station on the Joetsu Bullet Train Line

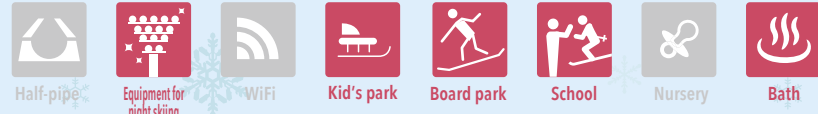
The view seen from the wide single slope, a specialty of Iwappara, will attract everyone from beginners to advanced skiers. Many courses are prepared for beginners and intermediate skiers. Easy to ski and comfortable. You can enjoy long courses up to 4 km, such as going from the cruise course to the front course, or skiing as you like.



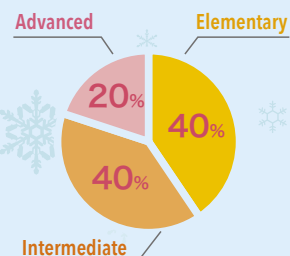
Course size

Maximum slope angle (°)	Longest skiing distance (m)	Number of courses	Number of lifts	Number of gondolas
35°	4km	20	9	0

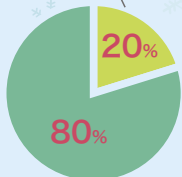
Ski resort facilities



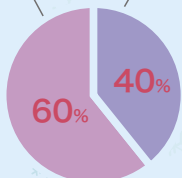
Course levels



Ungroomed snow area



Skier



Snowboarder



13

Gala Yuzawa Ski Resort

Address 1039-2 Azakayataira, O-aza Yuzawa, Yuzawa-machi, Minamiuonuma-gun Phone number 025-785-6543

<https://gala.co.jp>

Directions

Expressway About 5 minutes by car from the Yuzawa Exit on the Kan-etsu Expressway

Bullet train 0 minutes on foot from Gala Yuzawa Station on the Joetsu Bullet Train Line

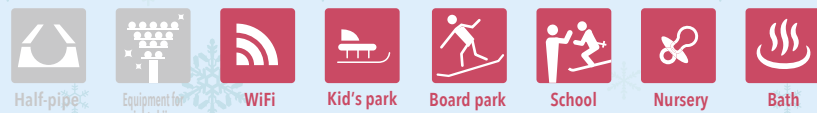
Very easy to reach: Directly connected to the bullet train station and about 5 minutes by car from the Yuzawa Exit. Many skiers enjoy the plentiful rental items. You can come here empty-handed. There are 16 courses on the slope for beginners to advanced skiers to ski on fresh snow. Relax in the Gala Bath Spa after skiing. Open till early May.



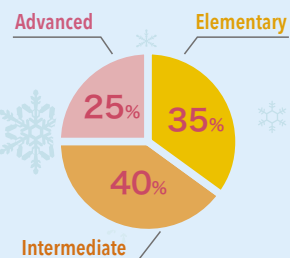
Course size

Maximum slope angle (°) **33°**
 Longest skiing distance (m) **2.5km**
 Number of courses **16**
 Number of lifts **9**
 Number of gondolas **2**

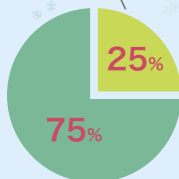
Ski resort facilities



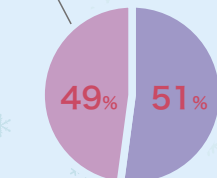
Course levels



Ungroomed snow area



Skier



Snowboarder

14

Joetsu Kokusai Ski Resort

Address 112-1 Kabanosawa, Minamiuonuma City Phone number 025-782-1028

<http://www.jkokusai.co.jp/>

Directions

Expressway About 7 minutes by car from the Shiozawa Ishiuchi Exit on the Kan-etsu Expressway

Bullet train 0 minutes on foot from Joetsu International Skiing Ground Station via the Joetsu Line after arriving at Echigo yuzawa Station on the Joetsu Bullet Train Line

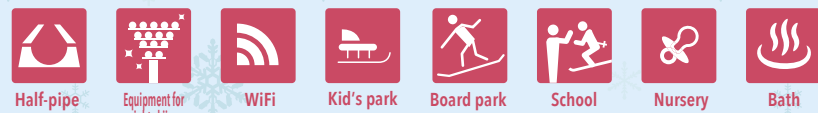
One of Japan's biggest slopes, consisting of four areas. The variety of courses for people of all levels to enjoy range from those for children to play in the snow to courses for experts. This is a popular area to stay for multiple days because you can ski here directly from the entrance of the Hotel Green Plaza Joetsu. The facilities are well-equipped with a halfpipe and a snow park.



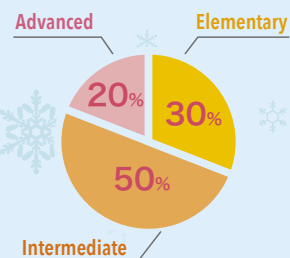
Course size

Maximum slope angle (°) **38°**
 Longest skiing distance (m) **6km**
 Number of courses **25**
 Number of lifts **22**
 Number of gondolas **0**

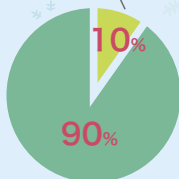
Ski resort facilities



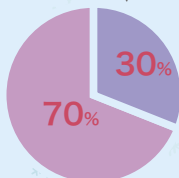
Course levels



Ungroomed snow area



Snowboarder



Skier

15

NASPA Ski Garden

Address 2117-9 Yuzawa, Yuzawa-machi, Minamiuonuma-gun Phone number 025-780-6888
<http://naspa.co.jp/ski>

Directions

- Expressway** About 5 minutes by car from the Yuzawa Exit on the Kan-etsu Expressway
- Bullet train** About 3 minutes by shuttle bus (free of charge) from Echigo Yuzawa Station on the Joetsu Bullet Train Line

Children who are learning to ski, families and advanced skiers can ski safely and securely. If you ski down from Quad 3 without stopping, even beginners can enjoy exhilarating long cruising of nearly 2,200 meters. The Hotel Naspa New Otani can be reached directly after skiing.



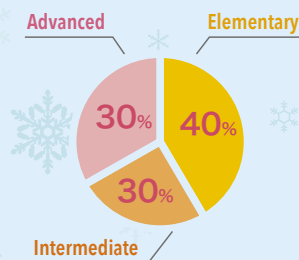
Course size

Maximum slope angle (°)	Longest skiing distance (m)	Number of courses	Number of lifts	Number of gondolas
38°	2.2km	8	5	0

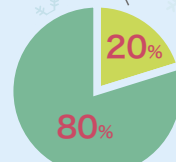
Ski resort facilities



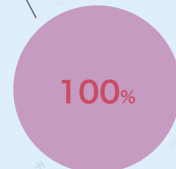
Course levels



Ungroomed snow area



Skier



16

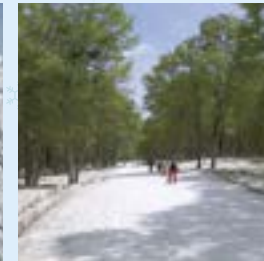
Okutadami Maruyama Ski Resort

Address 1317-3 Aza Ohtori, Yunotani Imogawa, Uonuma City Phone number 025-795-2750
<http://www.okutadami.co.jp/ski>

Directions

- Expressway** About 50 minutes by car from the Koide Exit on the Kan-etsu Expressway
- Bullet train** About 90 minutes by shuttle bus from Urasa Station on the Joetsu Bullet Train Line

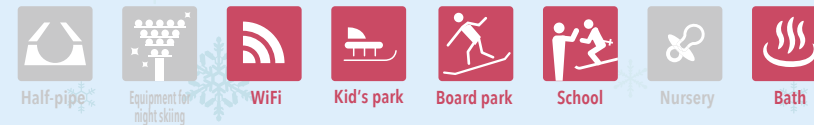
100% natural snow! We feature 2 long operating periods: Late November to early January and mid March to mid May (Spring season). The first powder is exceptionally good, even for Niigata. In spring you can ski comfortably on deep snow through new green in stable weather. Snow lovers gather here.



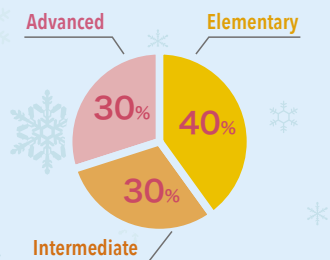
Course size

Maximum slope angle (°)	Longest skiing distance (m)	Number of courses	Number of lifts	Number of gondolas
37°	4km	10	5	0

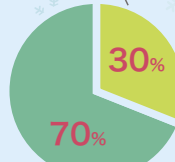
Ski resort facilities



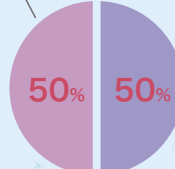
Course levels



Ungroomed snow area



Skier



17

New Greenpia Tsunan Ski Resort

Address 12300 Akinari, Tsunan-machi, Nakauonuma-gun Phone number 025-765-4611

Directions

- Expressway** About 40 minutes by car from the Shiozawa Ishiuchi Exit on the Kan-etsu Expressway
- Bullet train** About 50 minutes by bus from Echigo Yuzawa Station on the Joetsu Bullet Train Line

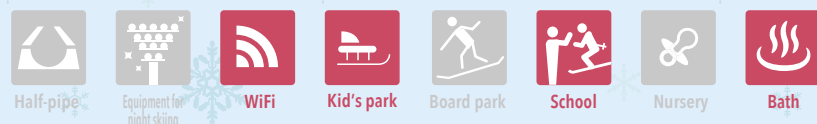
Beginner to advanced skiers can enjoy skiing here regardless of their ability. We take pride in our good powder which you cannot forget once you have experienced it. There is a large fine-view hot-spring bath, indoor swimming pool and bowling alley in the hotel on the slope. You can have fun in a gym after skiing too. Lighting sky lanterns, a prayer in the night sky of snow country, can be experienced every day.



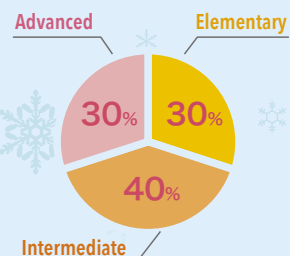
Course size

Maximum slope angle (°) **38°**
 Longest skiing distance (m) **2.1km**
 Number of courses **5**
 Number of lifts **3**
 Number of gondolas **0**

Ski resort facilities



Course levels

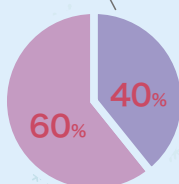


Ungroomed snow area



Compacted area

Snowboarder



18

Ishiuchi Maruyama Ski Resort

Address 1782-2 Ishiuchi, Minamiuonuma City Phone number 025-783-5571
<http://ishiuchi.or.jp>

Directions

- Expressway** About 5 minutes by car from the Shiozawa Ishiuchi Exit on the Kan-etsu Expressway
- Bullet train** About 15 minutes by shuttle bus from Echigo Yuzawa Station on the Joetsu Bullet Train Line

Extensive slope for a wide range of people to enjoy: skiers, snowboarders and families. Another feature is a full range of facilities like snow parks including jibs. Have fun on ungroomed snow and moguls. Another attraction here is the food. You have choices from about 20 places to eat.



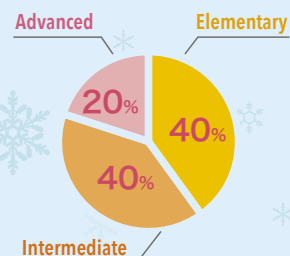
Course levels

Maximum slope angle (°) **35°**
 Longest skiing distance (m) **4km**
 Number of courses **23**
 Number of lifts **15**
 Number of gondolas **0**

Ski resort facilities



Course levels

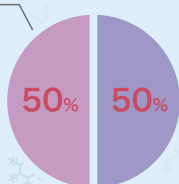


Ungroomed snow area



Compacted area

Skier



Enjoy these activities after skiing!

Winter cuisine of Niigata

Rice, sake, seafood...let us introduce the taste of Niigata, with its variety of exquisite cuisine



Snow Crab

Crabs caught in the Japan Sea
Known for their sweet, rich taste

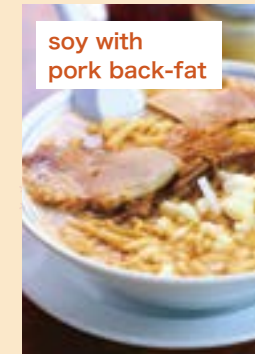


Sweet shrimp

Firm in texture and very sweet
Also good for sushi



rich miso flavor



soy with pork back-fat



soy with ginger



soy sauce flavor



curry ramen

Niigata Ramen

Each region's ramen is unique!
Among them are what we call "Niigata's 5 major ramen," referring to the type of broth, with soy sauce flavor, soy with pork back-fat, soy with ginger, rich miso flavor, and curry ramen.



Niigata wagyu beef

Wagyu beef with great quality marbling and fat
There is a multitude of ways to enjoy it.



Angler fish

Not only the meat, but the skin and organs of the fish are also edible.
We recommend cooking it in hot pot during the winter.



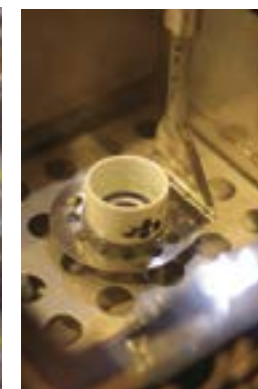
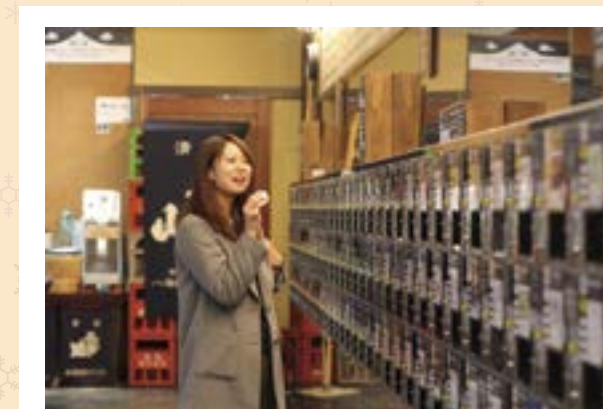
Hegisoba noodles

Hegisoba is a type of soba that is served in bite size servings over a wooden container called a "hegi."
The soba noodles themselves contain funori seaweed, which gives them a smooth, firm texture.



Echigohime strawberries

Niigata's brand of strawberries
Sweet and juicy! You can also try strawberry picking!



Ponshu-kan: The Echigo Sake Museum

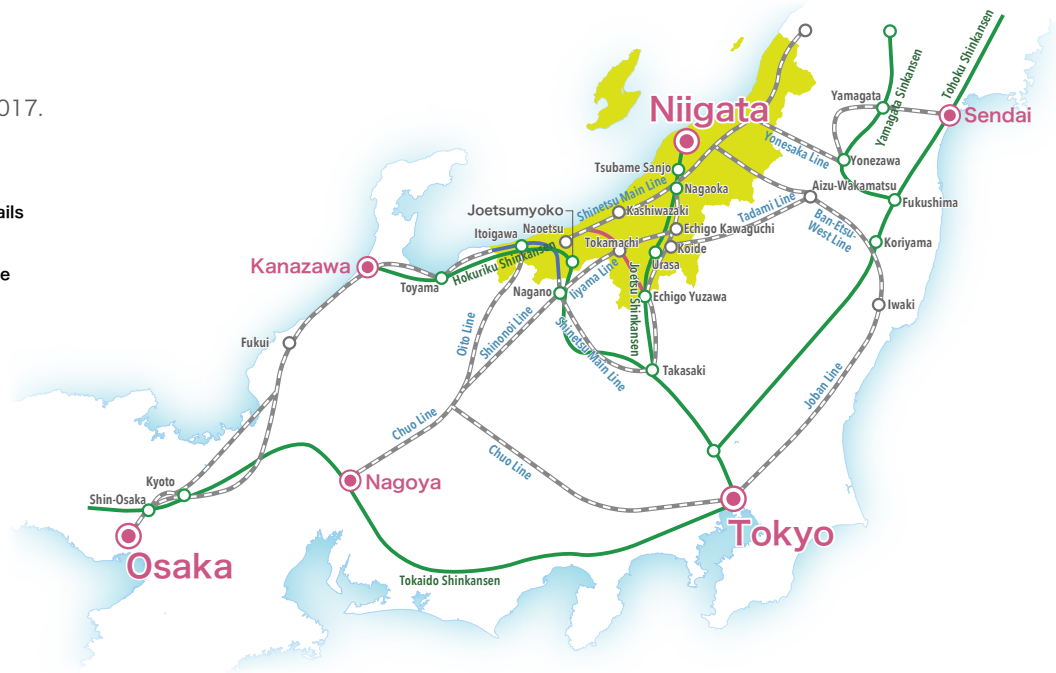
Niigata has the largest number of sake breweries in Japan, with as many as 90.
At the sake museum you can taste sake from all of the breweries. Try 5 of your favorites for only ¥500! The museum has locations in Echigo-Yuzawa Station, Niigata Station, and Nagaoka Station.

ACCESS TO NIIGATA

Access to Niigata

It is data of major transportation.
Information accurate as of Sep. 2017.

- JR Shinkansen
- JR Conventional Lines/Private Rails
- Echigo Tokimeki Railway
- Hokuetsu Express Hokuhoku Line



> From Tokyo

> To Yuzawa
By JR Train

Tokyo Sta. — Joetsu Shinkansen — Echigo Yuzawa Sta.
Approx. 1hr.20min.

> To Joetsu
By JR Train

Tokyo Sta. — Hokuriku Shinkansen — Joetsumyoko Sta.
Approx. 2hr.

> From Seoul

> To Niigata Airport
By Air

Seoul (Incheon) — Niigata Airport
3flights per week / Approx. 2hr.15min.

> From Harbin

> To Niigata Airport
By Air

Harbin — Niigata Airport
3flights per week / Approx. 2hr.15min.

> From Shanghai

> To Niigata Airport
By Air

Shanghai (Pudong) — Niigata Airport
2flights per week / Approx. 1hr.55min.

> From Taipei

> To Niigata Airport
By Air

Taipei (Taoyuan) — Niigata Airport
2flights per week / Approx. 2hr.30min.

> From Hong Kong

> To Niigata Airport
By Air

Hong Kong — Niigata Airport
2flights per week / Approx. 4hr.45min.

